



PREPAINTED PRODUCTS

POSCO C&C 30 Year Plastisol

(28th January 2020)

posco
C&C



POSCO C&C Plastisol Overview

POSCO C&C's Plastisol offers a range of benefits over other pre-painted products. It's durability, resistance to corrosion and advanced colour fastness allows for a performance warranty up to 30 years.

- 200µm Durable abrasion resistant topcoat
- Leathergrain embossed finish
- 30 Year POSCO performance warranty
- Extensive colour range
- Aluzinc substrate providing outstanding corrosion resistance
- 5-7µm primer reverse coat suitable for foam adhesion
- Excellent formability and durability
- Excellent colour stability
- Suitable for roof pitches down to 1°
- Fire certified



| | Test Result | Test Standard |
|---|-------------------|---------------|
| Film Thickness | Ave. 200µm | EN 13523-1 |
| Gloss (60°) | 10~35% | EN 13523-2 |
| Emboss | Leathergrain | |
| Abrasion resistance (CS-10, 1kg, 250rev) | 10~15mg | EN 13523-16 |
| Scratch resistance | > 5000g | EN 13523-12 |
| Flexibility | T-Bend (0T, 16°C) | EN 13523-7 |
| Reverse impact | 18J | EN 13523-5 |
| Salt Spray Resistance | 1000 hours | EN 13523-8 |
| Humidity Resistance | 1500 hours | EN 13523-26 |
| Internal Environment Classification | CPI5 | EN 10169 |
| Corrosion resistance Category | RC5 | EN 10169 |
| UV resistance category | Ruv3 | EN 10169 |
| Fire Classification | C – s2, d0 | EN 13051-1 |
| Guarantee | Up to 30 years | |

POSCO C&C Plastisol Properties

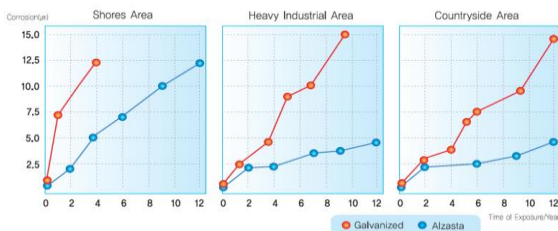
POSCO C&C have undertaken extensive testing in order to highlight the benefits of both their Aluzinc substrate, and their 200µm Plastisol topcoat. A number of these are detailed below.

Aluzinc Substrate

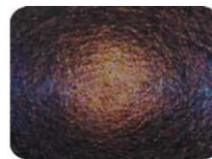
POSCO C&C's Plastisol is applied to a hot-dipped 55% Al-Zn alloy coated steel sheet.

This provides a number of benefits:

- Boasts excellent corrosion resistance from both robust oxidation of aluminium, and the sacrificial cathodic protection of a zinc coating
- Maintains 3 to 6 times the durability of galvanised material in a range of corrosive environments
- Excellent formability, and durability at forming sections due to relatively small micro-cracks in forming



Ball Impact Test



⬇ No peeling-off at 1kg/ 500mm impact test

Bending Test

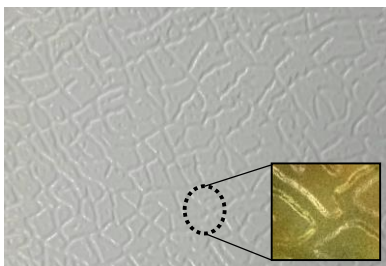


⬆ No peeling-off at 0° and 180° bend test

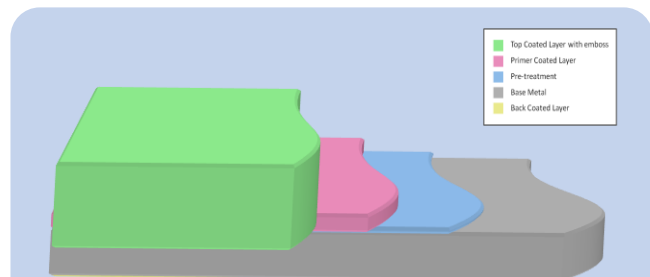
PVC Coating

POSCO C&C's Plastisol coating has the resin preserving properties of plastic, which gives outstanding weather resistance, chemical resistance, and corrosion resistance.

- The paint layer can elongate up to 300%-400% without cracking, allowing for heavy processing and forming with high flexibility
- The plastisol applied consists of polyvinyl chloride based thermoplastic resins with short molecular chains for better UV resistance with advanced colour fastness
- Multi layer coatings are applied to Al-Zn coated high tensile steel strip and oven cured to ensure optimum adhesion. This gives a sheet with excellent corrosion resistance and climatic protection together with abrasion resistance and high strength



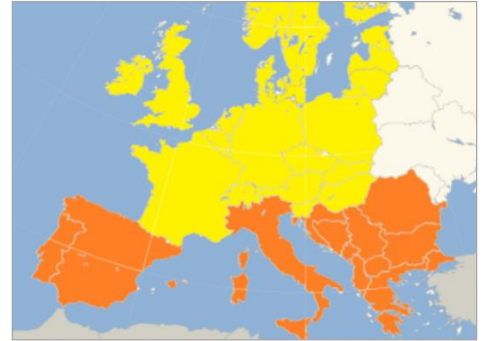
- 200µm top coat
- Leathergrain emboss pattern
- Extensive range of colours
- 5-7µm epoxy back coat
- Suitable for foam adhesion



POSCO C&C Plastisol Warranty

POSCO C&C offer a mill backed performance warranty for this product, covering their full range of colours and a range of European locations.

| Items | Region | Color | 30 Year PVC | |
|--|---------|---------|-------------|-------|
| | | | Roofs | Walls |
| Northern Europe  | Inland | Class 1 | 30y | 30y |
| | | Class 2 | 20y | 25y |
| | Coastal | Class 1 | 25y | 25y |
| | | Class 2 | 15y | 20y |
| Southern Europe  | Inland | Class 1 | 15y | 15y |
| | | Class 2 | 15y | 10y |
| | Coastal | Class 1 | 8y | 10y |
| | | Class 2 | 8y | 10y |



Class 1 : Light colours

Class 2 : Dark colours

Coastal: within 1 mile of any coast

| Class 1 | Nearest BS ref. | Class 2 | Nearest BS ref. |
|----------------|-----------------|------------------|-----------------|
| Bamboo | 08C35 | Black | 00E53 |
| Buttermilk | 10C31 | Cornflower Blue | 18E53 |
| Goosewing Grey | 10A05 | Country Green | RAL6011 |
| Ivory | RAL9002 | Crimson | RAL3004 |
| Merlin Grey | 18B25 | Golden Glow | 06E56 |
| Moorland Green | 12B21 | Golden Yellow | 08E51 |
| Mushroom | 10B19 | Forest Green | RAL6002 |
| New Grey | 10B23 | Jade | 14C37 |
| Olive Green | 12B27 | Juniper Green | 12B29 |
| Pigeon Grey | 18B17 | Linden Green | 12E53 |
| Wedgewood Blue | 18C37 | Navy | RAL5003 |
| White | 00E55 | New Red | 04D44 |
| Willow | 12B17 | Ocean Blue | 18C39 |
| Albatross | 18B17 | Pacific Blue | 18E58 |
| | | Poppy Red | 04E53 |
| | | Saffron | 08E53 |
| | | Sage Green | 12D45 |
| | | Slate Blue | 18B29 |
| | | Tangerine Orange | 06E53 |
| | | Aztec Yellow | 10E55 |
| | | Terracotta | 04C39 |
| | | Vandyke Brown | 08B29 |
| | | Anthracite | RAL7016 |